

PTZ170 HDC

FUEL INSPECTION FULL-HD CAMERA

ahlbergcameras.com/products/cameras/ptz170-hdc



The PTZ170 HDC is engineered for detailed close-up inspections with Full-HD imaging of highly irradiated fuel. It is widely used in 4-FACE fuel inspection systems, fresh fuel elevators, fuel preparation machines, and other manipulators, and has been successfully delivered for PWR, BWR, VVER and CANDU reactors. The camera features precise pan & tilt movements and active internal cooling, ensuring reliable performance even in the most demanding nuclear environments.

MORE INFORMATION ABOUT PTZ170 HDC

APPLICATIONS

- For placement on 4-face fuel inspection system rig
- For placement on fresh fuel elevator
- For placement on fuel preparation machine

BENEFITS

- Full-HD resolution
- Very high radiation tolerance
- Auto-focus and auto-iris
- Tilt function integrated
- Pan function integrated
- LED lights integrated

SPECIFICATIONS

PHYSICAL CHARACTERISTICS

Width	190 mm
Length	470 mm
Height	174 mm
Weight	40 kg
Underwater weight	
Housing material	Stainless steel EN 1.4301, AISI 304 Anodized Aluminum
Front glass material	Polycarbonate

OPTICAL FEATURES

Resolution	1080p, Full-HD
Zoom	x100 (x10 optical, x10 digital)
Horizontal Angle View	47° (wide end)

MECHANICAL FEATURES

Pan Angle	-20° to +20°
Tilt Angle	-90° to +90°

ENVIRONMENTAL TOLERANCES

Radiation Tolerance (dose rate)	10 000 Gy/h (50 000 rad/h)
---------------------------------	----------------------------

We reserve the right to alter specifications without prior notice

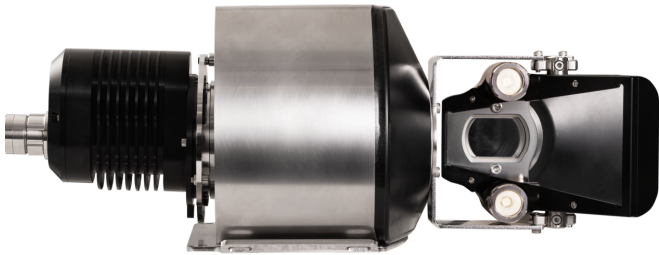
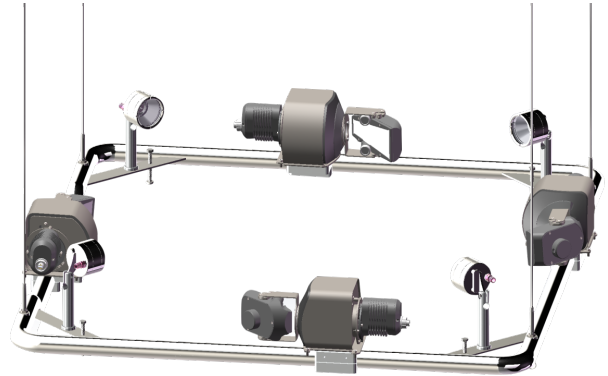
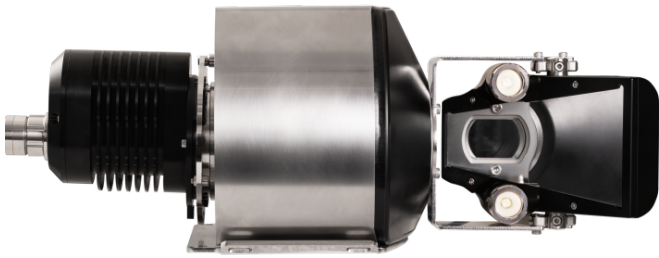
Radiation Tolerance (total dose)	300 000 Gy (30 000 000 rad)
Maximum Operating Temperature	50°C, 70°C up to 72h
Water Tightness	min 3.5 bar

INTEGRATED LIGHTNING

Type	2 LED-lights
Output	1800 lumen
Beam Angle	38°

We reserve the right to alter specifications without prior notice

PTZ170 HDC IMAGES



We reserve the right to alter specifications without prior notice